

## DESCRIPTION

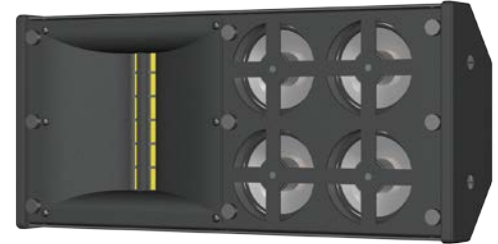
The **AE-90x35** is a M/HF loudspeaker specifically designed to enhance and extend articulation that is otherwise lost with distance.

A 6" ribbon HF driver with wave guide and four 3.5" MF drivers are employed to match the clarity and detail of other Innovox ribbon-based arrays.

The enclosure's shallow depth and minimal height allow easy integration into the architectural environment.

### KEY FEATURES:

- under balcony MF/HF fill for auditoriums
- 35° V x 90° H coverage
- very thin profile and height
- 140 Hz to 20kHz ( $\pm 3$  dB)
- 116 dB long term output



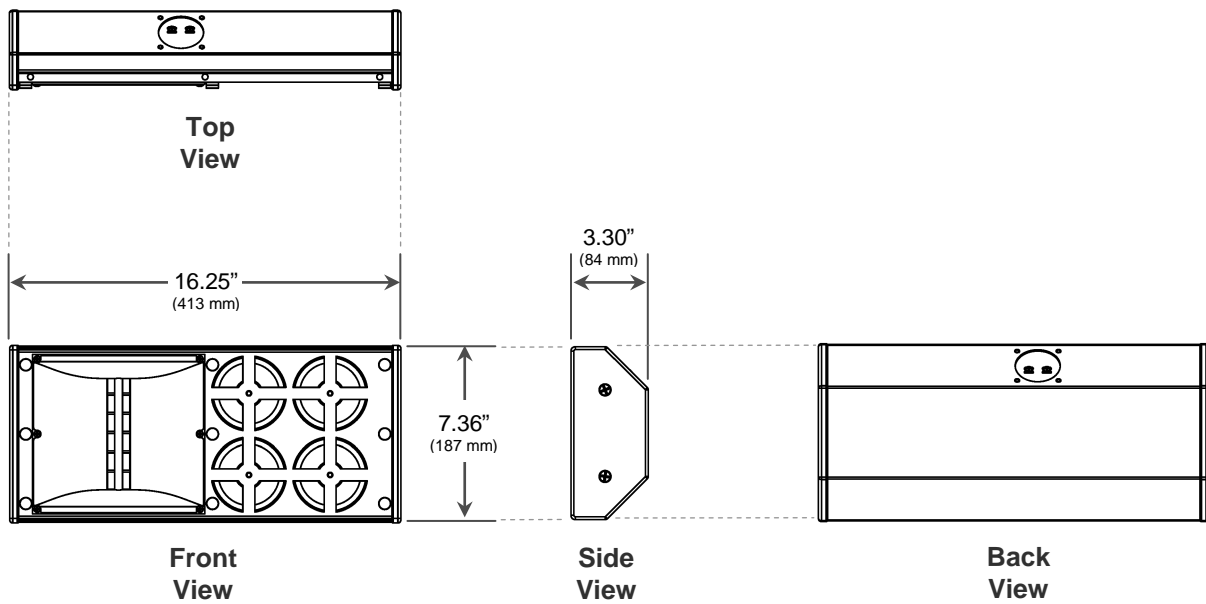
## NOMINAL DATA

Frequency Response	140 – 20,000 Hz, $\pm 3$ dB
Sensitivity	94 dB @ 2.83V / 1M
Impedance	8 $\Omega$ (70-volt transformer available)
Power Handling	250 W long-term (AES-2)
Maximum Output	116 dB long-term, 122 dB peak
Nominal Coverage Angles	35° V x 90° H
Dimensions	height: 7.36" / 187 mm width: 16.25" / 413 mm depth: 3.30" / 84 mm
Net Weight	8.6 lbs / 3.9 kg
Shipping Weight	11.0 lbs / 5.0 kg

## DESCRIPTIVE DATA

System Configuration	Passive 2-way
Components & Loading	(4) 3.5" MF (1) 6" ribbon HF
Recommended High-Pass Filter	4 <sup>th</sup> order Butterworth @120 Hz
Enclosure Type	Sealed
Enclosure Material	Steel, aluminum & Baltic Birch plywood
Finish	Black or White standard (custom colors available)
Connectors	(2) dual binding head screws
Included Hardware	Steel yoke
Grille	Painted perforated steel

**DIMENSIONAL DRAWINGS**



**INCLUDED HARDWARE**

*Mounting Bracket*

