

(20° Vertical Included Angle)

DESCRIPTION

The **HLA-16XT via-20** is a sixteen element J-array loudspeaker. It has sixteen 3.5" mid-frequency drivers and sixteen ribbon high frequency drivers. Designed as a "delay fill" loudspeaker, it extends the effective projection of an HLA-16 "main" loudspeaker, and it can also be used as a stand-alone voice range speaker.

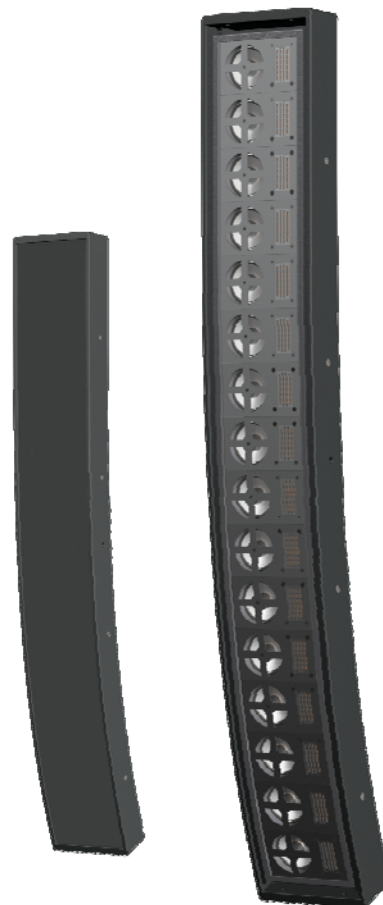
The **HLA-16XT via-20** has been preconfigured in an asymmetrical 20°V by 120°H coverage pattern with vertical directivity to 300 Hz, and low frequency response to 100 Hz. A single HLA-16XT via-20 can provide voice range coverage of both the front row and seats as far as 75 feet away with exceptional clarity and detail. As a delay loudspeaker it can extend the projection of an HLA-16 Hybrid Line Array to beyond 175 feet.

KEY FEATURES:

- asymmetrical 20° V x 120° H coverage
- vertical control to 300 Hz
- -3 dB low frequency response 100 Hz
- effective projection to 75 feet

APPLICATIONS:

- optimum for lower ceiling applications
 - churches
 - presentation spaces
 - meeting rooms
- voice range PA



NOMINAL DATA

Frequency Response	100 Hz to 20k Hz, ± 3 dB
Sensitivity	97 dB @ 2.83V / 1M
Impedance	8Ω
Power Handling	1500 W long-term (AES-2)
Maximum Output	123 dB long-term, 129 dB peak
Nominal Coverage	120° H x 20° V
Dimensions	height: 60.08" / 1526 mm width: 8.37" / 213 mm depth: 3.66" / 93 mm
Net Weight	31 lbs / 14.0 kg
Shipping Weight	42 lbs / 19.0 kg

DESCRIPTIVE DATA

System Configuration	curvilinear M/H line array
Components & Loading	16 x 3.5" MF 16 x 3" ribbon HF
Recommended High-Pass Filter	4 th order Butterworth @100 Hz
Enclosure Type	Curvilinear array: sealed enclosure
Enclosure Material	Steel, Aluminum & Baltic Birch Plywood
Finish	White or Black (custom colors available)
Connectors	NL4 & dual binding head screws
Suspension Hardware	(2) 3/8-16 threaded points on each side; steel yoke included
Grille	Painted perforated steel

DIMENSIONAL DRAWINGS

