

HLA-1650 RP



Hybrid Line Array Series

EXPERIENCE THE SOUND
OF TRUE ENGAGEMENT

True Sound Engagement in Large Venues

DESCRIPTION

The **HLA-1650 RP** is a hybrid integration of a sixteen element J-array loudspeaker and a dipole directional low frequency loudspeaker. It is powered by a rack-mounted Powersoft 2800- Watt amplifiers with on-board DSP.

The J-array portion contains sixteen 3.5" mid-frequency drivers and sixteen ribbon high frequency drivers. The low frequency portion incorporates two 14" high-output low frequency drivers in a dipole configuration to extend vertical LF control.

It has been preconfigured in an asymmetrical 120° H by 35° V coverage pattern with vertical directivity to 135 Hz, and low frequency response to 50 Hz.



KEY FEATURES

- Asymmetrical 120° H x 50° V Coverage
- Power and DSP by Powersoft
- Maintains Vertical Control to 135 Hz

APPLICATIONS

- Churches
- Lecture Halls
- Presentation Spaces
- Performing Arts Centers

DESCRIPTIVE DATA

System Configuration:	Biamped hybrid integration of a curvilinear M/H line array and a low frequency dipole
Components & Loading:	(16) 3.5" MF drivers; (16) 3" ribbon HF drivers; (2) 14" LF drivers
Input:	Balanced line level with XLR
Enclosure Type:	Curvilinear array: sealed enclosure Dipole LF: sealed enclosure
Enclosure Material:	Steel, aluminum & Baltic Birch plywood
Finish:	Black or White standard (custom colors available)
Suspension Hardware:	(2) 3/8-16 threaded points on each side; steel yoke included
Grille:	Painted perforated steel

NOMINAL DATA

Frequency Response:	50 – 20,000 Hz \pm 3 dB
Class D Power:	2 x 1000 W RMS
Maximum Long-Term Output:	123 dB
Peak Output:	129 dB
Nominal Coverage Angles:	120° H x 50° V
Dimensions	Height: 55.14" / 1401 mm Width: 15.44" / 392 mm Depth: 13.76" / 350mm
Net Weight:	119 lbs / 54.1 kg
Shipping Weight:	138 lbs / 62.7 kg

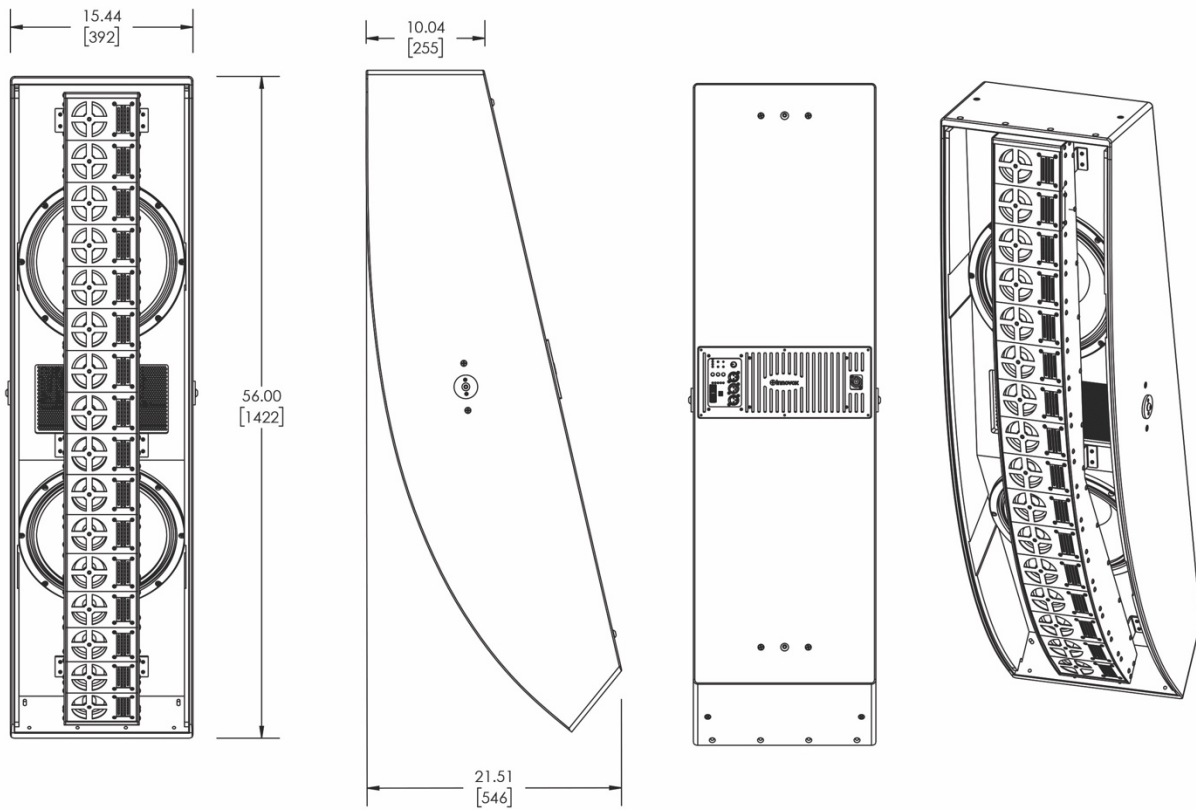
HLA-1650 RP

Hybrid Line Array Series



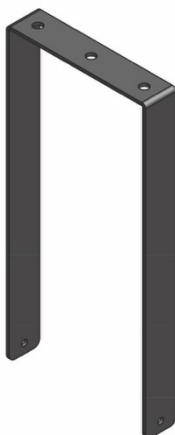
EXPERIENCE THE SOUND
OF TRUE ENGAGEMENT

DIMENSIONAL DRAWINGS

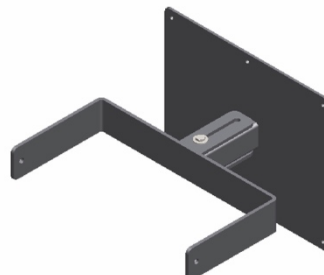


INCLUDED HARDWARE

U-bracket



OPTIONAL HARDWARE



Wall-Mount

HLA-9-WM

innovoxaudio.com

296 Pascal Street • St. Paul, MN 55104