

# HLA-935XT

## Hybrid Line Array Series



EXPERIENCE THE SOUND  
OF TRUE ENGAGEMENT

### Face-to-Face Clarity in Large Venues

#### DESCRIPTION

The **HLA-935XT** is a nine element J-array loudspeaker. It has nine 3.5" mid-frequency drivers and nine ribbon high frequency drivers. It is designed to be a stand-alone voice range speaker or can be used as an Articulation Extender.

Articulation Extension is a special process which compensates for the non-linear loss of high frequency transients as sound travels through air. Refreshing these transients is essential to maintaining speech intelligibility throughout a large venue. When properly applied in conjunction with correct signal delay, articulation extenders bring face-to-face clarity out to every seat in a room.

The **HLA-935XT** has been preconfigured in an asymmetrical 35° V by 120° H coverage pattern with vertical directivity to 600 Hz, and low frequency response to 100 Hz.



#### KEY FEATURES

- Asymmetrical 120° H x 35° V Coverage
- Maintains Vertical Control to 600 Hz
- Excellent Voice-range Loudspeaker
- Can be used for Articulation extension

#### APPLICATIONS

- Churches
- Lecture Halls
- Presentation Spaces
- Performing Arts Centers

#### DESCRIPTIVE DATA

System Configuration:	Curvilinear M/H line array
Components & Loading:	(9) 3.5" MF drivers; (9) 3" ribbon HF drivers
Input Connectors:	2-pole Phoenix connector
Enclosure Type:	Curvilinear array: sealed enclosure
Enclosure Material:	Steel, aluminum & Baltic Birch plywood
Finish:	Black or White standard (custom colors available)
Suspension Hardware:	(2) 3/8-16 threaded points on each side; steel yoke included
Grille:	Painted perforated steel

#### NOMINAL DATA

Frequency Response:	100 – 20,000 Hz ±3 dB
Sensitivity:	98 dB @ 2.83V / 1M
Impedance:	8 Ω
Power Handling:	750 W long-term (AES-2)
Maximum Long-Term Output:	121 dB
Peak Output:	127 dB
Nominal Coverage Angles:	120° H x 35° V
Dimensions	Height: 34.93" / 887 mm
	Width: 8.43" / 214 mm
	Depth: 3.64" / 92 mm
Net Weight:	20 lbs / 9.1 kg
Shipping Weight:	24 lbs / 10.9 kg

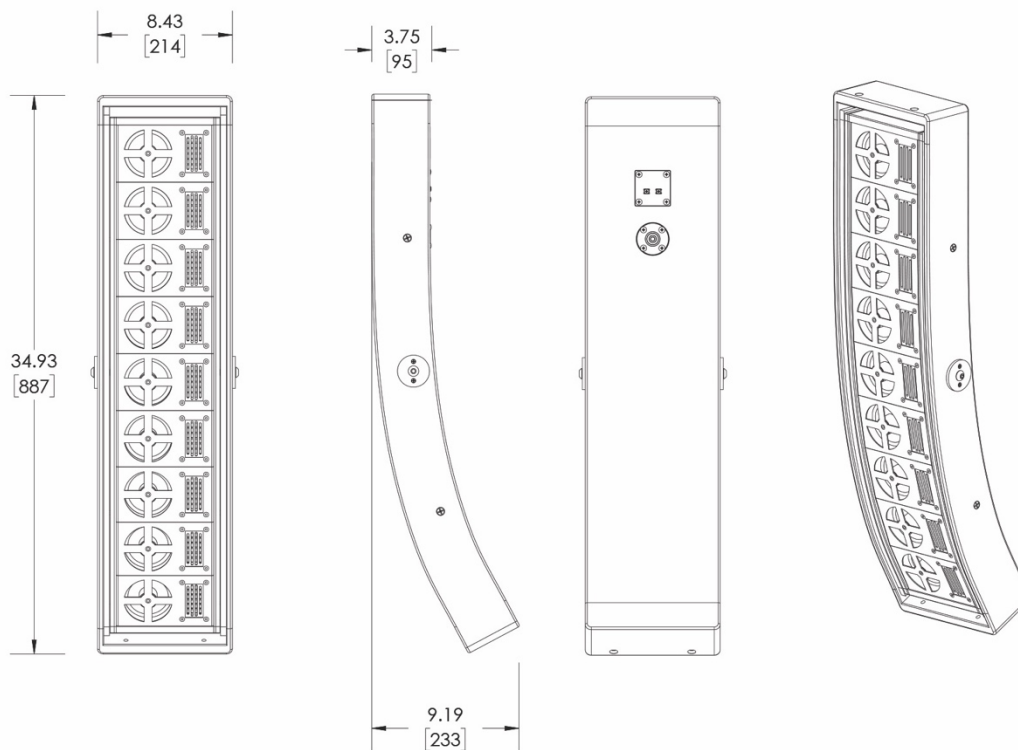
# HLA-935XT

Hybrid Line Array Series



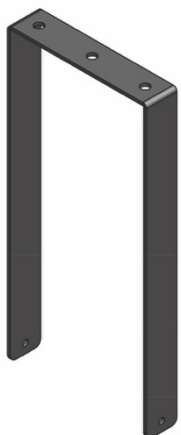
EXPERIENCE THE SOUND  
OF TRUE ENGAGEMENT

## DIMENSIONAL DRAWINGS



## INCLUDED HARDWARE

### U-bracket



## OPTIONAL HARDWARE

### Wall-Mount

HLA-9-WM

