

HLA-935 RP

Hybrid Line Array Series



EXPERIENCE THE SOUND
OF TRUE ENGAGEMENT

True Sound Engagement in Large Venues

DESCRIPTION

The **HLA-935RP** is a hybrid integration of a nine element J-array loudspeaker and a dipole directional low frequency loudspeaker. It is powered by a Powersoft rack-mounted amplifier with DSP and 1600-Watts of managed class D power.

The J-array portion contains nine 3.5" mid-frequency drivers and nine ribbon high frequency drivers. The low frequency portion incorporates two 14" high-output low frequency drivers in a dipole configuration to extend vertical LF control.

It has been preconfigured in an asymmetrical 120° H by 35° V coverage pattern with vertical directivity maintained to 160 Hz, and low frequency response to 50 Hz.



KEY FEATURES

- Asymmetrical 120° H x 35° V Coverage
- Power and DSP by Powersoft
- Maintains Vertical Control to 160 Hz

APPLICATIONS

- Churches
- Lecture Halls
- Presentation Spaces
- Performing Arts Centers

DESCRIPTIVE DATA

System Configuration:	Biamped hybrid integration of a curvilinear M/H line array and a low frequency dipole
Components & Loading:	(9) 3.5" MF drivers; (9) 3" ribbon HF drivers; (2) 14" LF drivers
Input:	Balanced line level with XLR
Enclosure Type:	Curvilinear array: sealed enclosure Dipole LF: sealed enclosure
Enclosure Material:	Steel, aluminum & Baltic Birch plywood
Finish:	Black or White standard (custom colors available)
Suspension Hardware:	(2) 3/8-16 threaded points on each side; steel yoke included
Grille:	Painted perforated steel

NOMINAL DATA

Frequency Response:	50 – 20,000 Hz ±3 dB
Managed Class D Power:	1600 W RMS
Maximum Long-Term Output: Peak Output:	121 dB 127 dB
Nominal Coverage Angles:	120° H x 35° V
Dimensions	Height: 37.75" / 959 mm Width: 15.44" / 392 mm Depth: 14.95" / 380mm
Net Weight:	88 lbs / 40.0 kg
Shipping Weight:	97 lbs / 44.1 kg

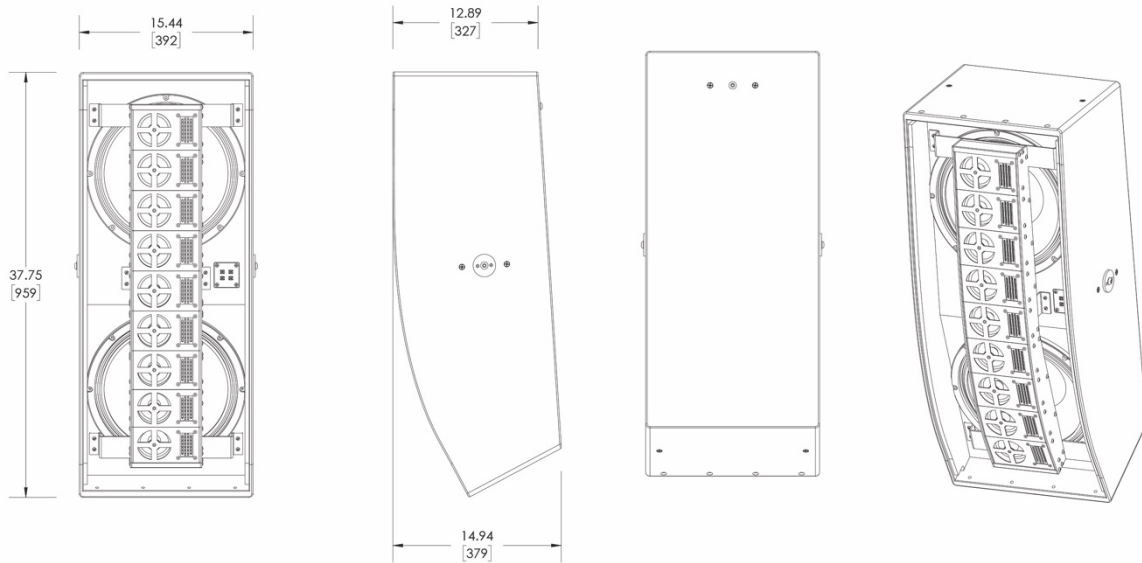
HLA-935 RP

Hybrid Line Array Series



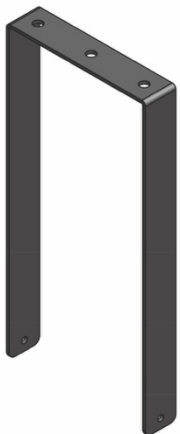
EXPERIENCE THE SOUND
OF TRUE ENGAGEMENT

DIMENSIONAL DRAWINGS

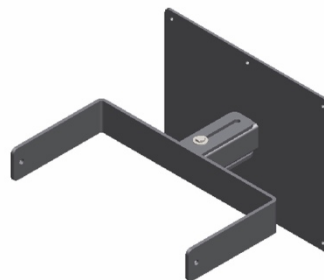


INCLUDED HARDWARE

U-bracket



OPTIONAL HARDWARE



Wall-Mount

HLA-9-WM