

# HLA-1635XT



## Hybrid Line Array Series

EXPERIENCE THE SOUND  
OF TRUE ENGAGEMENT

### True Sound Engagement in Large Venues

#### DESCRIPTION

The **HLA-1635XT** is a sixteen element J-array loudspeaker. It has sixteen 3.5" mid-frequency drivers and sixteen ribbon high frequency drivers. It is designed to be a stand-alone voice range speaker or can be used as an Articulation Extender.

Articulation Extension is a special process which compensates for the non-linear loss of high frequency transients as sound travels through air. Refreshing these transients is essential to maintaining speech intelligibility throughout a large venue. When properly applied in conjunction with correct signal delay, articulation extenders bring face-to-face clarity out to every seat in a room.

The **HLA-1635XT** has been preconfigured in an asymmetrical 120° H x 35° V coverage pattern with vertical directivity to 400 Hz, and low frequency response to 100 Hz.



#### KEY FEATURES

- Asymmetrical 120° H x 35° V Coverage
- Maintains Vertical Control to 400 Hz
- Excellent Voice-range Loudspeaker
- Can be used for Articulation extension

#### APPLICATIONS

- Churches
- Lecture Halls
- Presentation Spaces
- Performing Arts Centers

#### DESCRIPTIVE DATA

System Configuration:	Curvilinear M/H line array
Components & Loading:	(16) 3.5" MF drivers; (16) 3" ribbon HF drivers
Input Connectors:	2-pole Phoenix connector
Enclosure Type:	Curvilinear array: sealed enclosure
Enclosure Material:	Steel, aluminum & Baltic Birch plywood
Finish:	Black or White standard (custom colors available)
Suspension Hardware:	(2) 3/8-16 threaded points on each side; steel yoke included
Grille:	Painted perforated steel

#### NOMINAL DATA

Frequency Response:	100 – 20,000 Hz $\pm$ 3 dB
Sensitivity:	98 dB @ 2.83V / 1M
Impedance:	8 $\Omega$
Power Handling:	1000 W long-term (AES-2)
Maximum Long-Term Output:	123 dB
Peak Output:	129 dB
Nominal Coverage Angles:	120° H x 35° V
Dimensions	Height: 59.44" / 1510 mm
	Width: 8.37" / 213 mm
	Depth: 3.76" / 96 mm
Net Weight:	31 lbs / 14.1 kg
Shipping Weight:	42 lbs / 19.1 kg

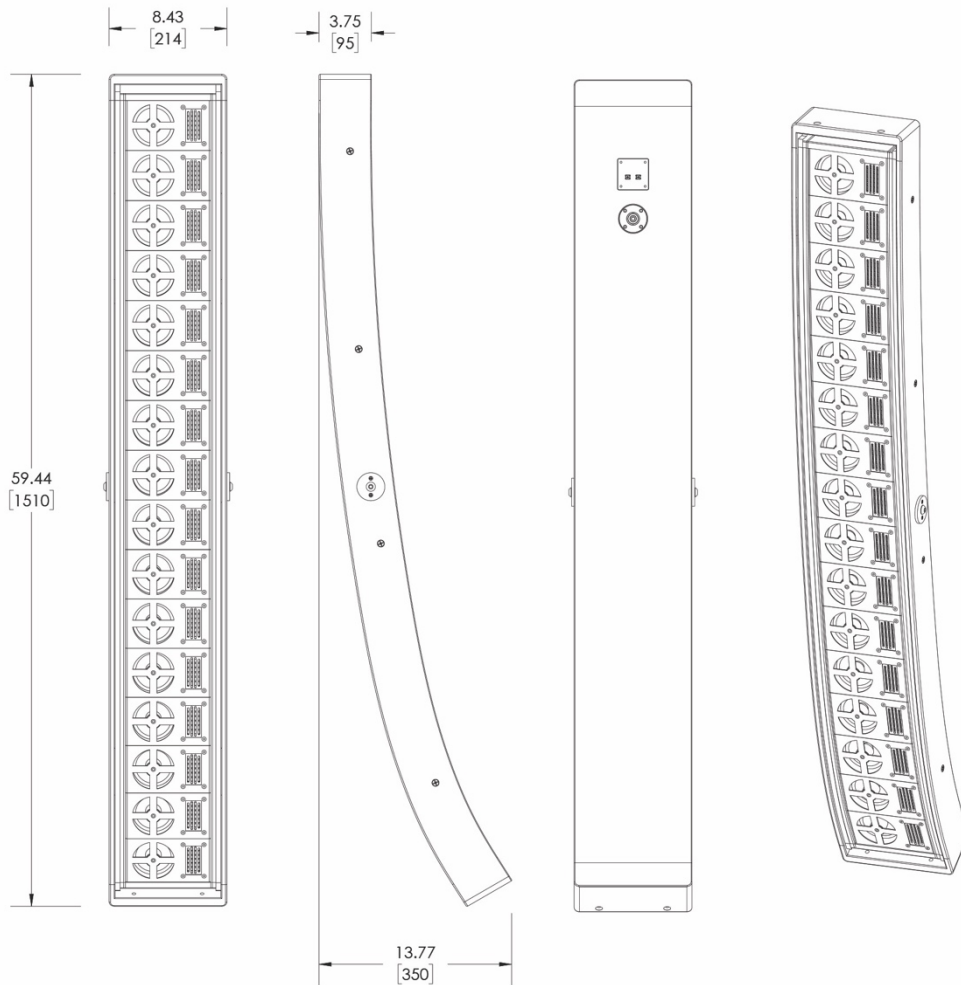
# HLA-1635XT

Hybrid Line Array Series



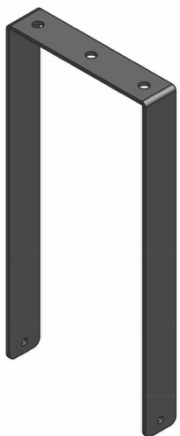
EXPERIENCE THE SOUND  
OF TRUE ENGAGEMENT

## DIMENSIONAL DRAWINGS

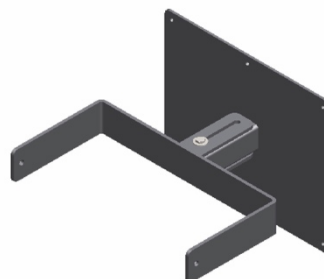


## INCLUDED HARDWARE

### U-bracket



## OPTIONAL HARDWARE



Wall-Mount

HLA-9-WM

[innovoxaudio.com](http://innovoxaudio.com)

296 Pascal Street • St. Paul, MN 55104