

HLA-950 RP



Hybrid Line Array Series

EXPERIENCE THE SOUND
OF TRUE ENGAGEMENT

True Sound Engagement in Large Venues

DESCRIPTION

The **HLA-950RP** is a hybrid integration of a nine element J-array loudspeaker and a dipole directional low frequency loudspeaker. It is powered by a Powersoft rack-mounted amplifier with DSP and 1600-Watts of managed class D power.

The J-array portion contains nine 3.5" mid-frequency drivers and nine ribbon high frequency drivers. The low frequency portion incorporates two 14" high-output low frequency drivers in a dipole configuration to extend vertical LF control.

It has been preconfigured in an asymmetrical 120° H by 50° V coverage pattern with vertical directivity maintained to 160 Hz, and low frequency response to 50 Hz.



KEY FEATURES

- Asymmetrical 120° H x 50° V Coverage
- Power and DSP by Powersoft
- Maintains Vertical Control to 160 Hz

APPLICATIONS

- Churches
- Lecture Halls
- Presentation Spaces
- Performing Arts Centers

DESCRIPTIVE DATA

| | |
|-----------------------|---|
| System Configuration: | Biamped hybrid integration of a curvilinear M/H line array and a low frequency dipole |
| Components & Loading: | (9) 3.5" MF drivers; (9) 3" ribbon HF drivers; (2) 14" LF drivers |
| Input: | Balanced line level with XLR |
| Enclosure Type: | Curvilinear array: sealed enclosure Dipole LF: sealed enclosure |
| Enclosure Material: | Steel, aluminum & Baltic Birch plywood |
| Finish: | Black or White standard (custom colors available) |
| Suspension Hardware: | (2) 3/8-16 threaded points on each side; steel yoke included |
| Grille: | Painted perforated steel |

NOMINAL DATA

| | |
|---------------------------|--|
| Frequency Response: | 50 – 20,000 Hz \pm 3 dB |
| Managed Class D Power: | 1600 W RMS |
| Maximum Long-Term Output: | 121 dB |
| Peak Output: | 127 dB |
| Nominal Coverage Angles: | 120° H x 50° V |
| Dimensions | Height: 37.75" / 959 mm Width: 15.44" / 392 mm Depth: 14.95" / 380mm |
| Net Weight: | 92 lbs / 41.8 kg |
| Shipping Weight: | 101 lbs / 45.9 kg |

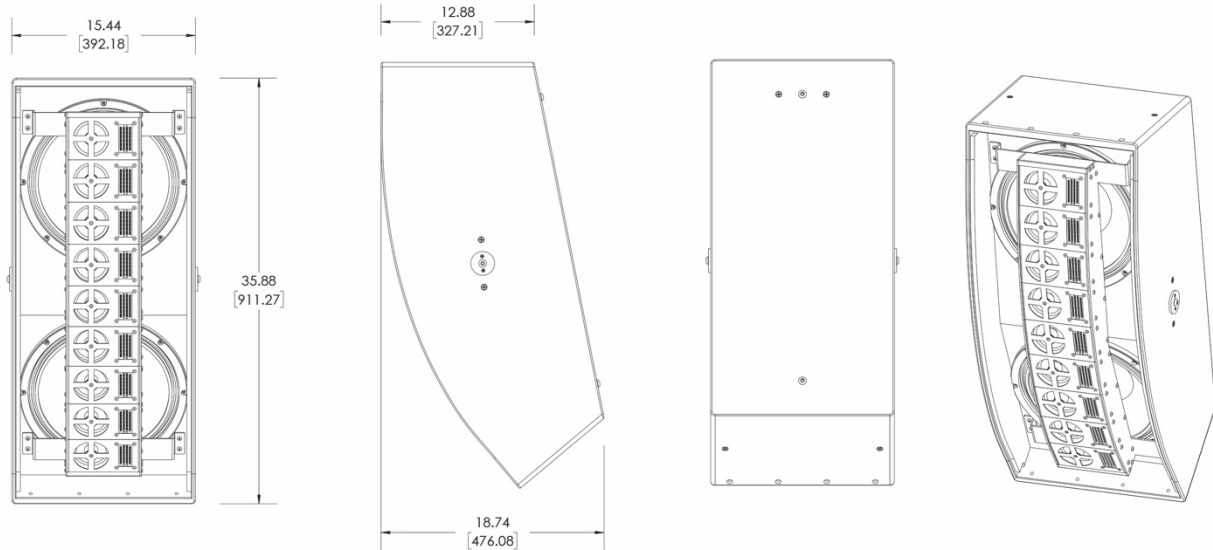
HLA-950 RP

Hybrid Line Array Series



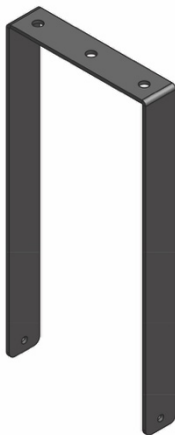
EXPERIENCE THE SOUND
OF TRUE ENGAGEMENT

DIMENSIONAL DRAWINGS

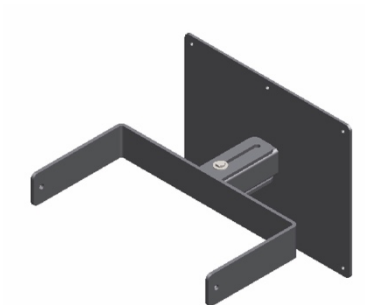


INCLUDED HARDWARE

U-bracket



OPTIONAL HARDWARE



Wall-Mount

HLA-9-WM