

# HLA-1235P



## Hybrid Line Array Series

EXPERIENCE THE SOUND  
OF TRUE ENGAGEMENT

### True Sound Engagement in Large Venues

#### DESCRIPTION

The **HLA-1235P** is a hybrid integration of a twelve element J-array and staged dual dipole directional mid/low frequency loudspeakers. It is powered by a Powersoft smart 4500W 4-channel amplifier with on-board DSP.

The J-array portion contains twelve 3.5" voice-range drivers and twelve ribbon high frequency drivers. The mid/low frequency portion incorporates four 6.5" mid-bass drivers, and four 8" low frequency drivers in a sequentially staged dipole configuration to extend vertical LF control.

It has been preconfigured in an asymmetrical 35° V by 120° H coverage pattern with vertical directivity to 96 Hz, and low frequency response to 60 Hz.



#### KEY FEATURES

- Asymmetrical 120° H x 35° V Coverage
- Power and DSP by Powersoft
- Maintains Vertical Control to 160 Hz

#### APPLICATIONS

- Churches
- Lecture Halls
- Presentation Spaces
- Performing Arts Centers

#### DESCRIPTIVE DATA

System Configuration:	Quad-amped hybrid integration of a curvilinear M/H line array, and staged dipole mid-bass & low frequency elements
Components & Loading:	(12) 3.5" MF drivers; (12) 3" ribbon HF drivers; (4) 6.5" mid-bass drivers; (4) 8" LF drivers
Input:	Balanced line level with XLR & XLR loop through
Enclosure Type:	Curvilinear array: sealed enclosure Dipole mid-bass: sealed enclosures Dipole LF: sealed enclosure
Enclosure Material:	Steel, aluminum & Baltic Birch plywood
Finish:	Black or White standard (custom colors available)
Suspension Hardware:	(2) 3/8-16 threaded points on each side; steel yoke included
Grille:	Painted perforated steel

#### NOMINAL DATA

Frequency Response:	60 – 20,000 Hz $\pm$ 3 dB
Managed Class D Power:	4500 W RMS
Maximum Long-Term Output: Peak Output:	121 dB 127 dB
Nominal Coverage Angles:	120° H x 35° V
Dimensions	Height: 43.13" / 1096 mm Width: 21.13" / 537 mm Depth: 13.16" / 334mm
Net Weight:	102 lbs / 46.4 kg
Shipping Weight:	116 lbs / 52.7 kg

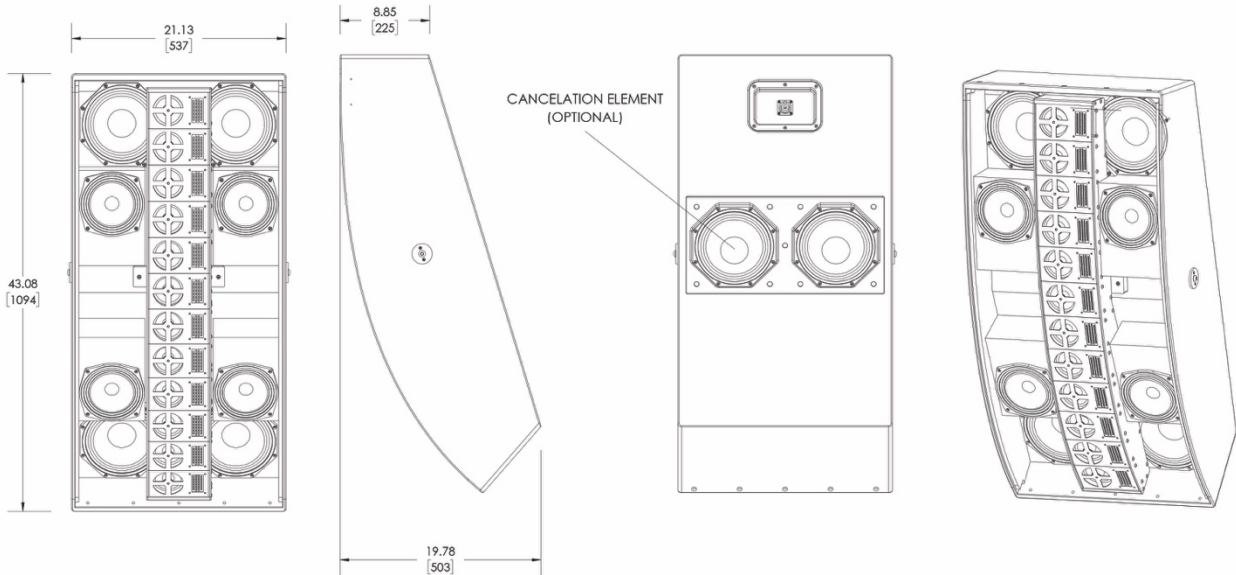
# HLA-1235P

Hybrid Line Array Series



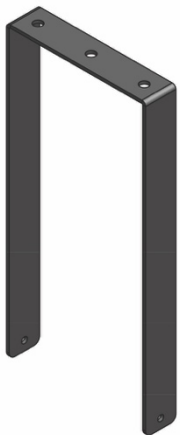
EXPERIENCE THE SOUND  
OF TRUE ENGAGEMENT

## DIMENSIONAL DRAWINGS

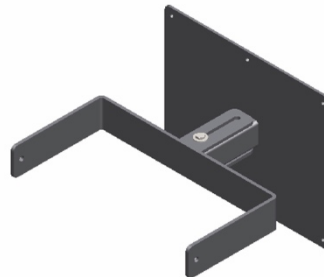


## INCLUDED HARDWARE

### U-bracket



## OPTIONAL HARDWARE



### Wall-Mount

HLA-9-WM