

AE-90x35

Articulation Extension Tools

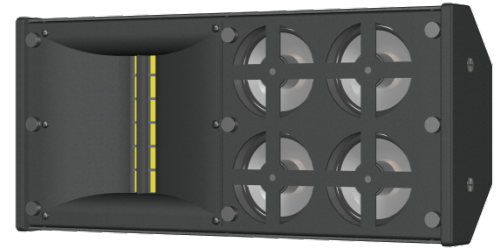


EXPERIENCE THE SOUND
OF TRUE ENGAGEMENT

Compensating for Loss of High Frequency Transients Essential for Speech Intelligibility

DESCRIPTION

The **AE-90x35** is a M/HF loudspeaker specifically designed to enhance and extend articulation that is otherwise lost with distance. A 6" ribbon HF driver with wave guide and four 3.5" MF drivers are employed to match the clarity and detail of other Innovox ribbon-based arrays. The enclosure's shallow depth and minimal height allow easy integration into the architectural environment.



KEY FEATURES

- 90° H x 35° V Coverage Pattern
- Transient Response of Ribbon HF driver
- Very thin profile

APPLICATIONS

- Articulation Extender in a large Sound System
- Mid-High Frequency Component used with Innovox DLF loudspeakers
- Under balcony speaker

DESCRIPTIVE DATA

System Configuration:	Passive 2-way
Components & Loading:	(4) 3.5" long-excursion MF drivers; (1) 6" ribbon HF driver
Recommended High-Pass Filter:	4 th order Butterworth @120 Hz
Enclosure Type:	Sealed
Enclosure Material:	Steel, aluminum & Baltic Birch plywood
Finish:	Black or White standard (custom colors available)
Connectors:	Phoenix
Included Hardware:	Steel yoke
Grille:	Painted perforated steel

NOMINAL DATA

Frequency Response:	140 – 20,000 Hz \pm 3 dB
Sensitivity:	94 dB @ 2.83 volts / 1M
Nominal Impedance:	8 Ω (70-volt transformer available)
Power Handling:	250 W long term (AES-2)
Maximum Long-Term Output:	116 dB
Peak Output:	122 dB
Nominal Coverage Angles:	35° H x 90° V
Dimensions	Height: 7.36" / 187 mm
	Width: 16.25" / 413 mm
	Depth: 3.30" / 84 mm
Net Weight:	11.5 lbs / 5.2 kg
Shipping Weight:	14 lbs / 6.4 kg

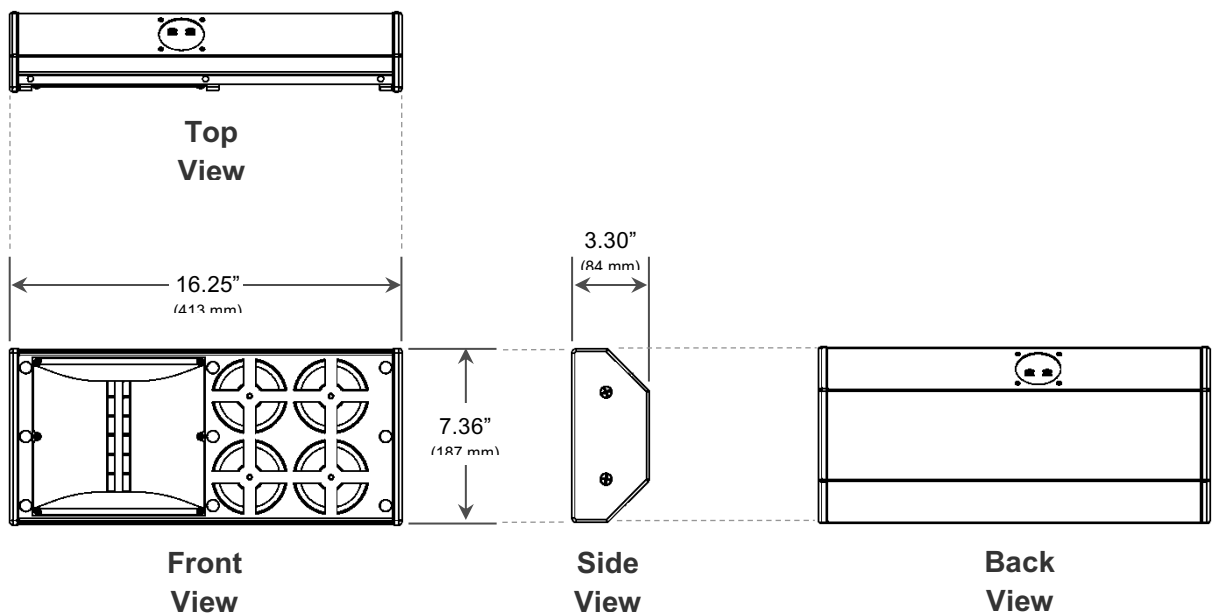
AE-90x35

Articulation Extension Tools



EXPERIENCE THE SOUND
OF TRUE ENGAGEMENT

DIMENSIONAL DRAWINGS



INCLUDED HARDWARE

Mounting Bracket

