

SL-2.1 RH

Slim Line Series



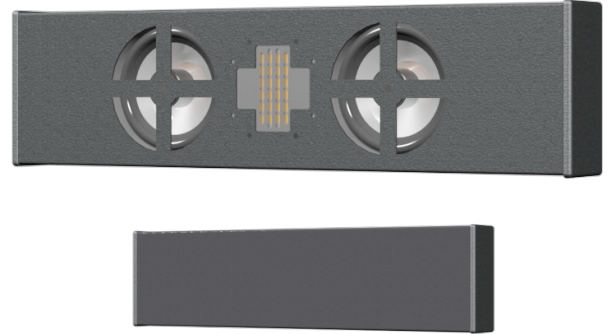
EXPERIENCE THE SOUND
OF TRUE ENGAGEMENT

Slim Profile Surface Mount Loudspeakers

DESCRIPTION

Slim Line surface-mount loudspeakers have a very thin profile (2" D or less) and are ideal for nearfield applications. They are voiced to deliver an accurate neutral sound.

The **SL-2.1 RH** is a horizontal version of the SL-2.1 R, a slim 2-way loudspeaker designed to be surface-mounted and disappear into the architectural surroundings. Its precision ribbon HF driver and two 4" long-excursion LF drivers resolve complex audio program with detail and clarity that does not seem possible from such a small package.



KEY FEATURES

- 120° H x 90° V Coverage
- Very Slim Profile (only 2" deep by 4" high)
- Blends into architectural environment

APPLICATIONS

- Sound for Video Presentation
- Home Theater LCR
- Home Theater Surrounds

DESCRIPTIVE DATA

System Configuration:	Horizontal low profile 2-way
Components & Loading:	(2) 4" long-excursion LF drivers; 1 ribbon HF driver
High-Pass Filter:	Built-in 1 st order @ 130 Hz
Enclosure Type:	Sealed enclosure, very low profile
Enclosure Material:	Steel chassis, with composite endcaps
Finish:	Black or White standard (custom colors available)
Connectors:	Phoenix
Suspension Hardware:	Mounting brackets included
Grille:	Integral, fabric wrapped

NOMINAL DATA

Frequency Response:	120 – 20,000 Hz \pm 3 dB
Sensitivity:	92 dB @ 2.83 volts / 1M
Nominal Impedance:	6 Ω (70-volt transformer available)
Power Handling:	90 W long term program (AES-2)
Maximum Long-Term Output:	108 dB @ 1 meter
Peak Output:	114 dB @ 1 meter
Nominal Coverage Angles:	120° H x 90° V
Dimensions	Height: 4.56" / 116 mm
	Width: 18.00" / 457 mm
	Depth: 2.06" / 52 mm
Net Weight:	7 lbs / 3.2 kg
Shipping Weight:	8 lbs / 3.6 kg

SL-2.1 RH

Slim Line Series



EXPERIENCE THE SOUND
OF TRUE ENGAGEMENT

DIMENSIONAL DRAWINGS

