

Installation Sub-Woofers



The **SB-115** is a very compact sub-bass module designed for permanent installation. It employs a 15-inch long-excursion driver in an optimally tuned vented enclosure which can be suspended from internal fly points or positioned on the floor.

The **SB-115** is an ideal choice for applications requiring precise transient response and low bass extension. Its compact size fits well under stages, on stage, and in flown arrays.

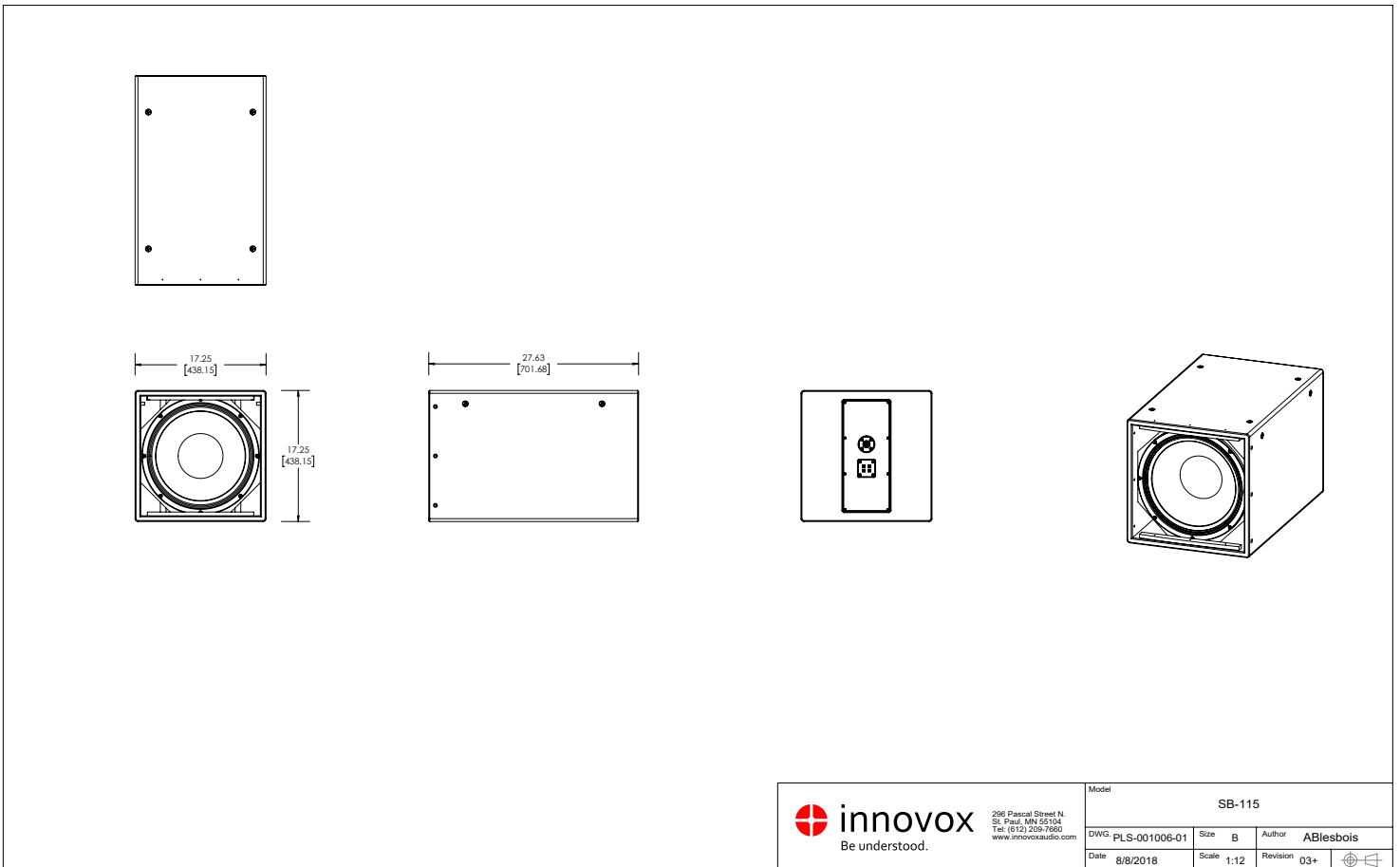
Key Features



- *Compact Size*
- *Bass Extension to 34 Hz*
- *Very High Output*
- *Excellent Transient Response*

Applications

- *Houses of Worship*
- *Performing Arts Centers*
- *Cinema*
- *Night Clubs*

Dimensional Drawings



 <p>296 Pascal Street N. St. Paul, MN 55104 Tel: (612) 209-7660 www.innovoxaudio.com</p>	Model SB-115		
	DWG: PLS-001006-01	Size B	Author ABlesbois
Date 8/8/2018	Scale 1:12	Revision 03+	

Unless otherwise specified all dimensions are: Inches [mm] Tolerance = ±0.100 inch angles ±1° All content copyright © INNOVOX AUDIO, LLC. 2018

Technical Specifications

DESCRIPTIVE DATA

System configuration	Dedicated sub-bass
Components & Loading	(1) 15" long-excursion cone driver
Recommended High-Pass Filter	4th order Butterworth @ 34 Hz
Input Connectors	NL-4 and dual binding head screws
Enclosure Type	Optimally tuned, vented
Enclosure Material	Hardwood multi-ply plywood
Suspension Hardware	(8) 3/8-16 threaded mounting points located on enclosure top, sides & back
Grille	Painted perforated steel.
Color	Standard colors are Black [BLK] or White [WHT], custom colors are also available [CST].

ACOUSTICAL DATA

Frequency Response	34 Hz - 350 Hz ±3dB
Coverage	Omni-directional
Long-term Output	123 dB
Peak Output	129 dB
Impedance	8 Ω
Power Handling	1000 W long term (AES-2)
Sensitivity	95 dB @ 2.83V / 1M (in operating band)

PHYSICAL

Height	17.25" [438 mm]
Width	17.25" [438 mm]
Depth	27.63" [702 mm]
Net Weight	90 lbs. [40.9 kg]
Shipping Weight	117 lbs. [53.2 kg]