

Slim Profile Surface Mount Loudspeakers



Slim Line surface-mount loudspeakers have a very thin profile (2" D or less) and are ideal for nearfield applications. They are voiced to deliver an accurate neutral sound. The **SL-2.1 US** is an ultra-slim 2-way loudspeaker designed to be surface-mounted

flat on a wall and disappear into the architectural surroundings. Its precision ribbon HF driver and two 4" long-excursion LF drivers resolve complex audio program with detail and clarity that does not seem possible from such a small package.

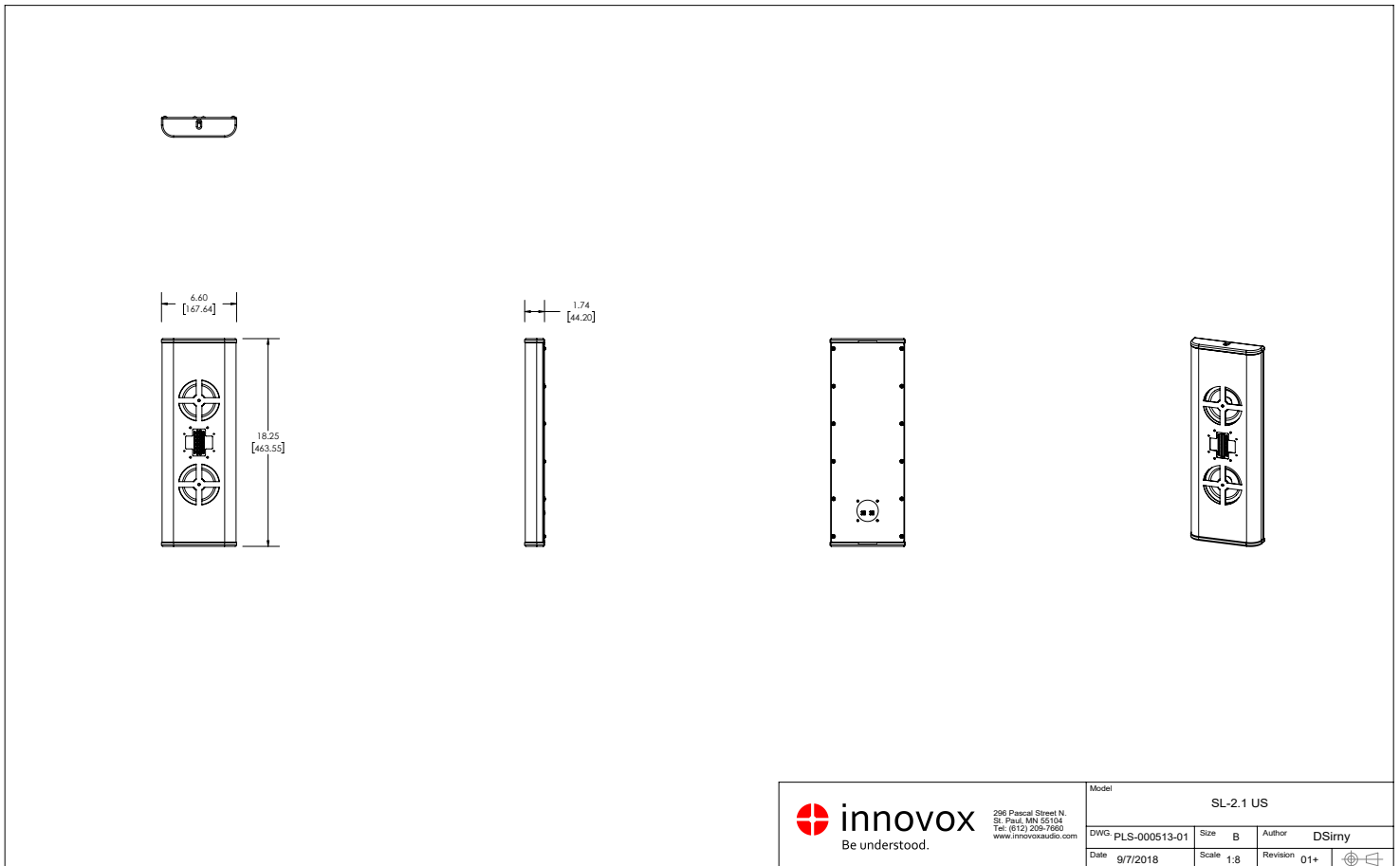
Key Features

- *120° H x 90° V Coverage*
- *Flat On-Wall Mounting*
- *Very Slim Profile (only 1.75" deep)*
- *Blends into Architectural Environment*
- *Hidden Mounting Bracket*

Applications

- *Sound for Video Presentations*
- *Home Theater LCR*
- *Home Theatre Surrounds*
- *Spot Fill in Larger Sound Systems*

Dimensional Drawings



Technical Specifications

DESCRIPTIVE DATA

System configuration	Low profile 2-way
Components & Loading	(2) 4" long-excursion LF drivers; 1 ribbon HF driver
Nominal Impedance	6 Ω (70-volt transformer available)
High-Pass Filter	Built-in 1st order @ 130 Hz
Input Connectors	Phoenix
Enclosure Material	Steel chassis, with composite endcaps
Enclosure Type	Sealed enclosure, very low profile
Finish	Black or white standard (custom colors available)
Grille	Integral, fabric wrapped
Suspension Hardware	Hidden mounting plate

ACOUSTICAL DATA

Frequency Response	120 Hz–20 KHz ±3dB
Sensitivity	92 dB @ 2.83 volts / 1M
Power Handling	90 W long term program (AES-2)
Nominal Coverage	120° H x 90° V
Maximum Long-term Output	108 dB @ 1 meter
Peak Output	114 dB @ 1 meter

PHYSICAL

Height	18.50" / 470 mm
Width	6.75" / 171 mm
Depth	1.75" / 44 mm
Net Weight	7 lbs. / 3.2 kg
Shipping Weight	8 lbs. / 3.6 kg