



Description

The CPS-12 PT is a high output, full-range, two-way point source loudspeaker housed in a compact pentagon enclosure. The multi faceted design allows it to seamlessly disappear into its surrounding architecture. It features a Low-frequency section with a reflex-tuned 12" driver, and a high-frequency section with a 1" exit compression driver mounted coaxially on the low-frequency driver.

The CPS-12 PT coincident driver orientation enables it to produce wide symmetrical coverage on both the horizontal and vertical axes. Its baltic birch construction and 16-gauge perforated grille make it highly

Key Features

- Symetrical 90deg coverage
- Extended frequency response
- High ceiling projection
- Pentagon enclosure
- Single point suspension

Nominal Data

Frequency Response	40Hz - 18Khz ± 3 dB
Power Handling (AES-2)	300W
Impedence	8 Ω
Sensitivity	97 dB 1W/1M
Max Long-Term SPL	122dB
Max Peak SPL	128dB
Coverage	90° Conical
Dimensions (HxWxL)	20.00" [508mm], 18.65" [474mm], 17.67" [449mm]
Net Weight	37 lbs. / 17 kg
Shipping Weight	45 lbs. / 20 kg

resistant to damage in active environments, ie basketballs.

The CPS 12 PT is availabe as a low-z (8 ohm) configuration or in a high-z configuration with EDCO USA 70 or 100 V transformers. It is also available in a verity of colors, the standard black/white or as a custom color upon request.

Applications

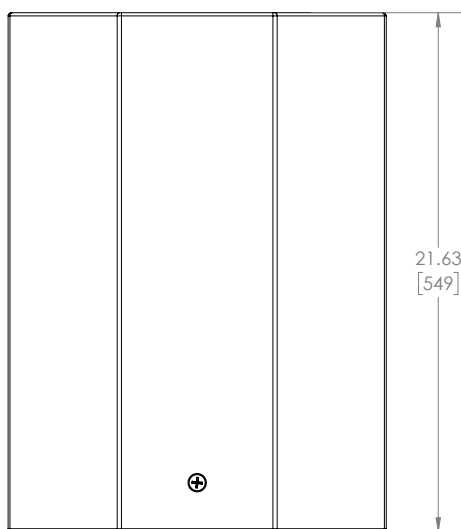
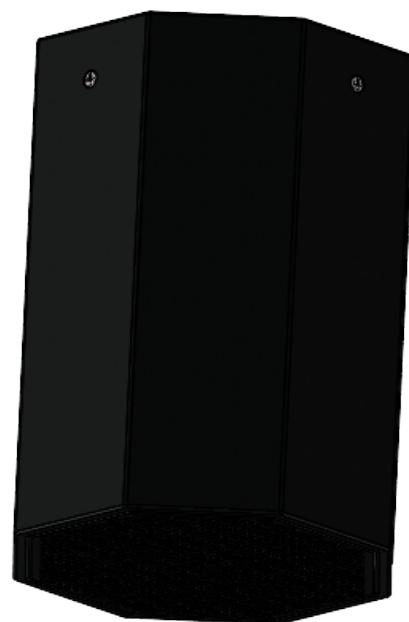
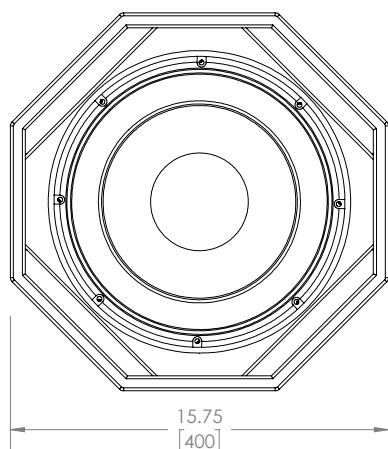
- Gymnasiums
- Sporting venues
- Multi-purpose event centers
- Places of gathering

Descriptive Data

System Configuration	Coaxial two-way full-range with precision passive crossover
Recommended min HPF	BW24 / 40Hz w
Component Loading	Low-frequency 12" cone driver, high-frequency 1" exit compression driver coaxial mounted on 12" driver
Input Configuration	Speakon NL4, 4-pos screw terminal
Enclosure Type	Reflex
Enclosure Materials	Multi-ply baltic birch
Finish	Warnex texture - perforated metal grille ¹
Suspension Hardware	Single threaded mounting point on top of enclosure

¹ Standard color is black, custom colors are available upon request, upcharge will apply

Technical Drawings



3/8-16 Fly-points x 9

